

# TE WĀNANGA TAIAO

## Guided Overnight Education Sessions at Pūkaha



This resource is for kaiako thinking of visiting Pūkaha National Wildlife Centre for one of our overnight sessions. Here, you'll find logistical information on the sessions, curriculum links and information on how to create a custom session.

# Planning Details

## Key contact:

Kelly Body  
Education Director/Pou Mātauranga  
kelly@pukaha.org.nz

## Booking enquiries:

bookings@pukaha.org.nz  
All bookings for overnight sessions must be made at least three weeks in advance.

## Overview:

Overnight sessions at Pūkaha come in two options:

- Full Overnight Education Experience at Pūkaha (option to add light catering)
- Overnight Experience Only at Pūkaha (option to add light catering)

When you book an overnight session with us, you'll be sent an induction guide alongside the RAMs forms that provides you and your taura with key information around what to expect on your visit.

## Session Availability:

Overnights available from Monday to Thursdays. We will accommodate groups of up to 32 taura maximum in our bunk rooms and eight accompanying adults. If your numbers exceed this, please email [bookings@pukaha.org.nz](mailto:bookings@pukaha.org.nz) to discuss options around using the wharenuī space.

For school groups aged 5+ we request one adult per four taura.

## Numbers and Cancellations:

Our overnight sessions have a minimum charge of 20 students + 5 adults. Smaller bookings are welcome, but this is a baseline minimum rate.

All events go ahead rain or shine, except in situations where Pūkaha management deems it is unsafe to proceed. If Pūkaha cancels a booking then we will provide you with a full refund or an opportunity to rebook. All other cancellations incur a 10% cancellation fee to cover our transaction costs.

Cancellations with less than one week's notice will not be refunded unless we are able to fill this booking space. If a cancellation is necessary due to natural disasters or other serious events, we will consider a request for a refund on compassionate terms or on a case-by-case basis.

We appreciate the assistance of all teachers and adult helpers and note that they are directly responsible for the behaviour of the children in their designated group, especially overnight. Any misconduct, such as leaving Te Wānanga Taiao at night without a Pūkaha guide, will be taken extremely seriously.

# Full Overnight Education Experience

Year 4 – 13

- **Group Size:** Between 10 and 32 students
- **Cost:** \$45 per person (including adults)
- **Time:** 11:00am – 9:30am (following day)
- **Catering:** Self-catered

## Session Includes:

- Two Pūkaha education guides to facilitate your sessions, overnight accommodation, full use of commercial kitchen, eating space, AV, showers and drying room.
- Guided day education session.
- Guided dusk experience.
- Guided dawn experience.
- Standard admission for self-guiding after 9:30am.

## Session Overview:

- 11:00am: Group arrival
- 11:00am – 12:00pm: Welcome from the Pūkaha team, introduction session with activities and local pūrākau. One-on-one health and safety induction for the lead staff member.
- 12:30pm – 3:30pm: Guided education session (standard tour or workshop session).
- 3:30pm – 5:45pm: Prep kai, dinner, tidy up.
- 6:00pm – 8:00pm: Guided dusk session.
- 8:00pm onwards: Wind down at Te Wānanga Taiao! There's AV equipment for movies, books, time for last-minute kai and drinks, or anything else you have planned.
- 6:30am: Wake up, breakfast, dishes and pack down gear.
- 7:30am – 9:00am: Guided dawn session or workshop.
- 9:00am – 9:30am: Pack down, bags on the bus either ready for departure, or self-guided time in the ngahere.

## Session Content Options:

- Standard Guided Session
- Tracking and Trapping
- Nocturnal Creatures
- Custom



# Overnight Experience Only

## Year 4 – 13

- **Group Size:** Between 10 and 32 students
- **Cost:** \$40 per person (including adults)
- **Time:** 3:30pm – 9:30am (following day)
- **Catering:** Self-catered

## Session Includes:

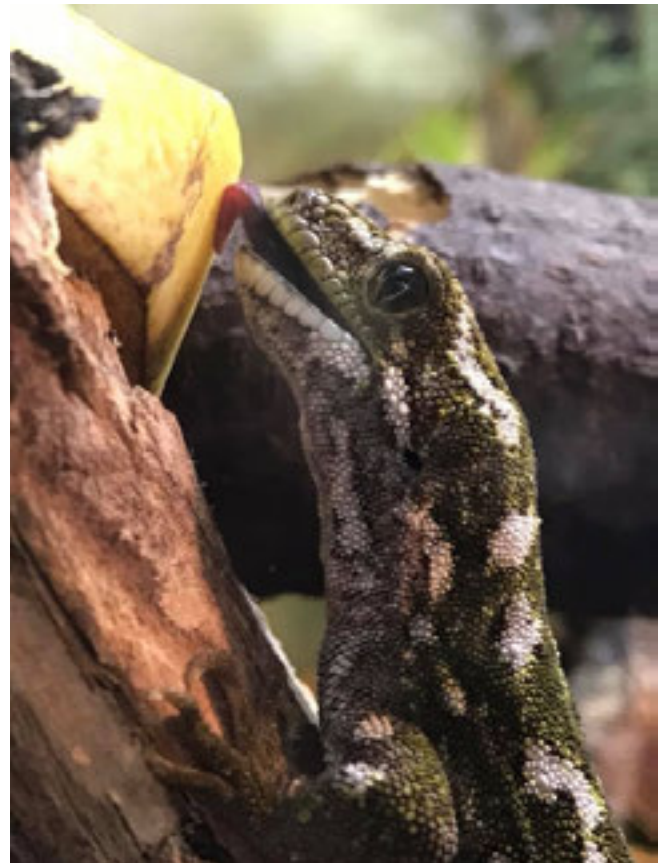
- Two Pūkaha education guides to facilitate your sessions, overnight accommodation, full use of commercial kitchen, eating space, AV, showers, drying room.
- Guided dusk experience.
- Guided dawn experience.
- Standard admission for self-guiding after 9:30am.

## Session Overview:

- 3:30pm: Group arrival
- 3:30pm – 4:30pm: Welcome from the Pūkaha team, introduction session with activities and local pūrākau. One-on-one health and safety induction for the lead staff member.
- 4:30pm – 5:45pm: Prep kai, dinner, tidy up.
- 6:00pm – 8:00pm: Guided dusk session.
- 8:00pm onwards: Wind down at Te Wānanga Taiao!
  
- 6:30am: Wake up, breakfast, dishes and pack down gear.
- 7:30am – 9:00am: Guided dawn session or workshop.
- 9:00am – 9:30am: Pack down, bags on the bus either ready for departure, or self-guided time in the ngahere.

## Session Content Options:

- Standard Guided Session
- Nocturnal Creatures
- Custom



# Add Catering to your Experience!

We have the option to add light catering to your overnight session, to be provided by the Kākā Café here at Pūkaha National Wildlife Centre.

**Price:** Additional \$20 per person

## What is Light Catering?

After your night session, come back to the wharekai for supper. This will consist of items such as:

- Hot drinks (with plenty of marshmallows)
- Seasonal fruit platters and yoghurt
- Crackers and seasonal vege sticks
- Muffins and biscuits

In the morning, you'll have access to a full continental breakfast, consisting of items such as:

- Toast and spreads
- Cereal options
- Seasonal fruit and yoghurt
- Hot drinks and juice
- Muffins and biscuits

You'll still have access to our full commercial kitchen for any lunch or dinner meals you're planning with your class.



# Curriculum Points:

No matter the session content, overnight sessions at Pūkaha National Wildlife Centre meet multiple subject areas in the National Curriculum and Te Marautanga o Aotearoa. Below are just a handful of examples:

## New Zealand Curriculum

New Zealand Curriculum Level Three	New Zealand Curriculum Level Five
<b>English</b>	<b>English</b>
<ul style="list-style-type: none"> <li>Listening, Reading and Viewing - Processes and Strategies</li> </ul>	<ul style="list-style-type: none"> <li>Listening, Reading and Viewing - Processes and Strategies</li> </ul>
<b>Visual Arts</b>	<b>Visual Arts</b>
<ul style="list-style-type: none"> <li>Understanding the visual arts in context</li> <li>Developing practical knowledge</li> <li>Communicating and interpreting</li> </ul>	<ul style="list-style-type: none"> <li>Understanding the visual arts in context</li> <li>Communicating and interpreting</li> </ul>
<b>Health and Physical Education</b>	<b>Health and Physical Education</b>
<ul style="list-style-type: none"> <li>Personal health and physical development</li> <li>Relationships with other people</li> <li>Healthy communities and environments</li> </ul>	<ul style="list-style-type: none"> <li>Personal health and physical development</li> <li>Relationships with other people</li> </ul>
<b>Learning Languages</b>	<b>Learning Languages</b>
<ul style="list-style-type: none"> <li>Communication</li> <li>Cultural knowledge</li> </ul>	<ul style="list-style-type: none"> <li>Communication</li> <li>Cultural knowledge</li> </ul>
<b>Science</b>	<b>Science</b>
<ul style="list-style-type: none"> <li>Understanding about Science</li> <li>Ecology</li> <li>Evolution</li> </ul>	<ul style="list-style-type: none"> <li>Living World - Ecology</li> </ul>
<b>Social Sciences/Aotearoa Histories</b>	<b>Social Sciences/Aotearoa Histories</b>
<ul style="list-style-type: none"> <li>Tūrangawaewae me te kaitiakitanga</li> </ul>	<ul style="list-style-type: none"> <li>Tūrangawaewae me te kaitiakitanga</li> <li>Tino rangatiratanga me te kāwanatanga</li> </ul>

## Te Marautanga o Aotearoa

Te Marautanga o Aotearoa Taumata 4	Te Marautanga o Aotearoa Level 6
<b>Hauora</b>	<b>Hauora</b>
<ul style="list-style-type: none"> <li>Hononga ki a Ranginui rāua ko Papatūānuku</li> </ul>	<ul style="list-style-type: none"> <li>Huatau o te Whanaungatanga</li> </ul>
<b>Pūtaiao</b>	<b>Pūtaiao</b>
<ul style="list-style-type: none"> <li>Te Ao Tūroa</li> <li>Ngā Tautake Pūtaiao Me Ngā Kōrero o Mua</li> </ul>	<ul style="list-style-type: none"> <li>Te Ao Tūroa</li> <li>Ngā Tautake Pūtaiao Me Ngā Kōrero o Mua</li> </ul>
<b>Tikanga-a-iwi</b>	<b>Tikanga-a-iwi</b>
<ul style="list-style-type: none"> <li>Te Whakaritenga Pāpori me te Ahurea</li> <li>Te Wāhi me te Taiao</li> </ul>	<ul style="list-style-type: none"> <li>Hitori</li> <li>Matawhenua</li> </ul>

# Standard Education Session

Year 4 – 13

Full Overnight Education Experience

Overnight Experience Only

## Overview:

Tauira will explore aspects of local history and stories, conservation, ecology, evolution and adaptations while in the ngahere both day and night. This session acts as an introduction to unique local flora and fauna, while providing key foundational knowledge and experiences tauira can take with them back to class. Split into three key sessions, tauira participate in guided sessions during the day, dusk and dawn.

Day	Dusk	Dawn
<p>Tauira get an overview of the history of Te Tapere Nui o Whatonga, Pūkaha, and the local leaders/conservation experts that have all contributed to this rich history.</p> <p>Tauira are guided through the ngahere, where they see aviary and wild birds, tuatara, lizards and huge tuna. Conversations will cover everything from the significance of protecting, restoring and enhancing biodiversity, the natural and cultural features of a place, and the evolution and adaptations of endemic and introduced species.</p>	<p>Time to pop on your headtorches and search for the critters that rule the night at Pūkaha. Listen out for the calls of ruru and kiwi, search for glowworms and moths and if you're lucky - spy geckos in the trees. Keep an eye out in our waterways, since our tuna, ika and kōura are always most active at night!</p> <p>At dusk, your group will be split in two. One group will have a guided forest walk and the other group will stay at Te Wānanga Taiao and participate in a series of activities outside. Groups will swap halfway, so everyone gets to experience everything!</p>	<p>Hear the dawn chorus at Pūkaha National Wildlife Centre – was that a korimako, a kākā or a kōkako?</p> <p>Head up the Loop Track with our guide to experience the forest waking up, or participate in a hands-on workshop to explore the ngahere more deeply.</p> <p>Whether that's surveying soil invertebrates or finding fungi, the options are endless!</p>



# Tracking and Trapping Session

Year 7– 13

 Full Overnight Education Experience

 Overnight Experience Only

## Overview:

Gain real-world conservation skills and learn how to track and humanely trap introduced predators in Aotearoa.

This session focuses on how to monitor introduced predators such as mice, rats and mustelids using best-practice conservation techniques, as well as how to analyse that data. Tauira then gain insight into how to check a trapline and use GPS equipment to navigate in the ngahere.

These sessions are ideal for data collection – whether that’s with your math classes or your senior secondary students. Compare the data found to Pūkaha tracking and trapping data, or even learn how to collect this kind of information on your own school groups!

### Day

Learn all about the unique wildlife in Aotearoa, their adaptations and their evolutionary history. Then, gain an understanding of the key introduced mammalian predators in Aotearoa, their adaptations and why they have had such a huge impact on our ecosystems.

Tauira will then build and set out their own monitoring equipment to help track predators at Pūkaha, before learning how to humanely trap predators. With emphasis on respecting these animals, tauira will gain real-world conservation skills and get to experience what it’s like to work outdoors for nature.

### Dusk

Just like our standard session, tauira will don headtorches and search for the critters that rule the night at Pūkaha. While listening for ruru and kiwi, can they spot anything else making themselves at home in the ngahere? What can they observe about their behaviour?

At dusk, your group will be split in two. One group will head into the ngahere with a Pūkaha guide for the experience above. The other group will stay at Te Wānanga Taiao, and participate in a series of activities outside, from setting out a light trap to search for invertebrates, to playing games all to do with life in the ngahere. Groups will swap halfway.

### Dawn

Tauira will get to hear the dawn chorus at Pūkaha National Wildlife Centre while gathering in their monitoring equipment. Did anything leave their tracks behind over night? How can we record that data, and what might we do about it?

Leave with monitoring equipment of your own to see what’s in your school grounds.



# Nocturnal Creatures Session

Year 4– 13

Full Overnight Education Experience

Overnight Experience Only

## Overview:

The huge range of wildlife that emerges at night in Aotearoa is staggering - giving us whole new worlds to explore.

This session centres on our nocturnal invertebrates and the ecosystems they support. How many different kinds of nocturnal invertebrates can we find? How are they different from what we see in the day? Can we find any of the creatures they support - like lizards, birds and bats? What attracts them to light traps, and how can we make our own? Note that weather and season will influence this session and what we can find.

### Day

Learn all about the unique nature of nocturnal creatures in Aotearoa, their habitat and the threats for their survival. Then, participate in your choice of session on everything creating your own light traps, to learning about powered flight in the animal world.

You can also spend a session mapping out a 'bat walk', looking for potential bat nesting sites and food sources. Tauria will still get to see our aviary birds and see a tuna feed.

### Dusk

Head out into the ngahere to see if you can find any nocturnal creatures. Can you hear any wētā in the trees? Can we find any lizards? Keep an eye out for all the creatures that rule the night at Pūkaha.

Participate in activities aiming to attract and catalogue night-flying invertebrates.

### Dawn

Hear the dawn chorus at Pūkaha National Wildlife Centre – was that a korimako, a kākā or a kōkako? Head up the Loop Track with our guide to experience the forest waking up or participate in a hands-on workshop to identify the invertebrates you caught overnight in your traps.



# Custom Session

Year 4 – 13

Full Overnight Education Experience

Overnight Experience Only

## Overview:

Work with our team to develop an overnight that specifically meets your needs – there's no better way to make sure the content your taurira have an experience that backs up your local curriculum.

Custom overnight sessions require advance booking (on top of the three weeks needed for overnight sessions), because we will work closely with you to design a session that meets the needs of yourself and your learners.

Enquire for a booking as you would normally, and our team will discuss your content focus with you. Then, we will design a session plan based on this information and send it to you for review and revision as necessary. Once the plan is approved, the session is confirmed.

## Example Sessions:

Gather your English class together for a slam poetry event at Pūkaha! Spend the day in the ngahere with our guides, getting to understand different parts of the ecosystem and how they work. Spend some time developing your work in the greenspace of the ngahere, and choose whether or not to engage your senses in a night tour or continue to work on your masterpiece into the night.

In amongst the dawn chorus of Pūkaha, deliver your poems to your class in a poetry event!

Or, gather your art equipment for a session that blends art and science together in the ngahere. Participate in a day session learning out our wildlife, their unique characteristics and their threats – especially wildlife that typically seems to fly under our radar. Pick up some art study techniques, gather a range of reference material and begin to plan your creation. Chose to participate in a night session to further your understanding of your study species, or stay and build up your artwork

In the morning, participate in another creative workshop, or show off your artwork to your peers!